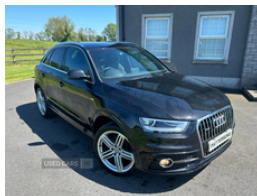


Audi Q3 2.0 TDI Quattro S Line Plus 5dr | May 2014

SORRY NOW SOLD!!

£8,750

SOLD!



Sorry now sold!!

VIEWING BY APPOINTMENT PREFERRED

All our vehicles are fully checked over, fully serviced and valeted before handover. We take great pride in the quality and preparation of all our cars and the service we provide to all our customers. We also offer a large range of finance options to suit all needs (T&Cs apply). All debit cards accepted and free delivery throughout NI!!

Vehicle Features

3 spoke multi-function Q design steering wheel, 3x3 point rear seatbelts, 6.5" colour display screen, 12V power in rear centre console, ABS+Electronic Brake force Distribution, Acoustic windscreen, Aluminium door sill trims, Audi music interface, Auto dimming rear view mirror, Black cloth headlining, Bluetooth hands free telephone connection, Body colour door mirrors, Body coloured bumpers, Chrome exhaust tailpipe, Coming home function, Cruise control, Curtain airbags, DAB digital radio module, Diesel particulate filter, Door mirror integrated indicators, Driver and passenger airbags, Driver and passenger side airbags, Dual zone climate control, EDL + ASR, Electrically operated child locks on rear doors, Electric front lumbar adjustment, Electromechanical parking brake, ESP, First aid kit, Front and rear electric windows, Front and rear headrests, Front and rear velour floor mats, Front centre armrest with storage compartment and angle adjustment, Front fog lights, Front passenger airbag deactivation, Front sports seats, Full paint finish, Heated windscreen washer jets, Height/reach adjust steering wheel, ISOFIX on front passenger and rear outer seats, LED daytime running lights, Light and rain sensor for auto activation of lights and windscreen wipers, Locking wheel bolts, Low washer fluid indicator, Matt brushed aluminium fascia and door trim inlays, MMI - Multi Media Interface control system, On

Miles:	108284
Fuel Type:	Diesel
Transmission:	Manual
Colour:	Black
Engine Size:	1968
CO2 Emission:	149
Tax Band:	F (£215 p/a)
Body Style:	Sport utility vehicle
Insurance group:	19E
Reg:	SM14CBF

Technical Specs

DIMENSIONS

Length:	4385mm
Width:	1831mm
Height:	1608mm
Seats:	5
Luggage Capacity (Seats Up):	420L
Gross Weight:	2135KG
Max. Loading Weight:	600KG

PERFORMANCE & ECONOMY

Fuel Consum. (Urban Cold):	40.9MPG
Fuel Consum. (Extra Urban):	56.5MPG
Fuel Consum. (Combined):	49.6MPG
Fuel Tank Capacity:	64L
Number Of Gears:	6 SPEED
Top Speed:	122MPH
Acceleration 0-100 km/h:	9.9s
Engine Power BHP:	139.5BHP

board computer, PAS, Privacy glass, Rear wiper, Remote central locking, Seatbelt warning light, Service interval indicator, S Line body styling, Speed dependent audio volume control, Split fold rear seat, Sunband for windscreen, Thatcham category 1 alarm + immobiliser, Tool kit, Top tether anchor plate for isofix child seat, Towbar preparation, Tyre pressure monitoring system, Under floor storage in luggage area, Voice control system, Warning triangle, Xenon Plus headlights+washers+auto range adjust